

Level up your skills and knowledge with a Lift & Escalator Apprenticeship

An Apprenticeship is a fantastic first step into our industry. It's a great mix of hands-on, one-to-one mentoring and structured learning. Plus, it's paid, so you earn as you learn.

Not only will you gain a nationally recognised qualification, a Level 3 QCF NVQ Diploma in Installation and Commissioning or Engineering Maintenance (depending on which one of the four pathways you choose to take), you'll train in the most advanced engineering and technology.

So, let's tell you all about what you will learn on your journey!

Core Skills: Lift/Escalator Electromechanic Level 3 Apprenticeship

Core Knowledge: Lift/Escalator Electromechanic Level 3 Apprenticeship

ADDITIONAL SKILLS & KNOWLEDGE

Pathway 1

Installation of traction and hydraulic lift systems

ADDITIONAL SKILLS & KNOWLEDGE

Pathway 2

Installation of escalator/moving walk systems

ADDITIONAL SKILLS & KNOWLEDGE

Pathway 3

Servicing, repair and maintenance of lift systems

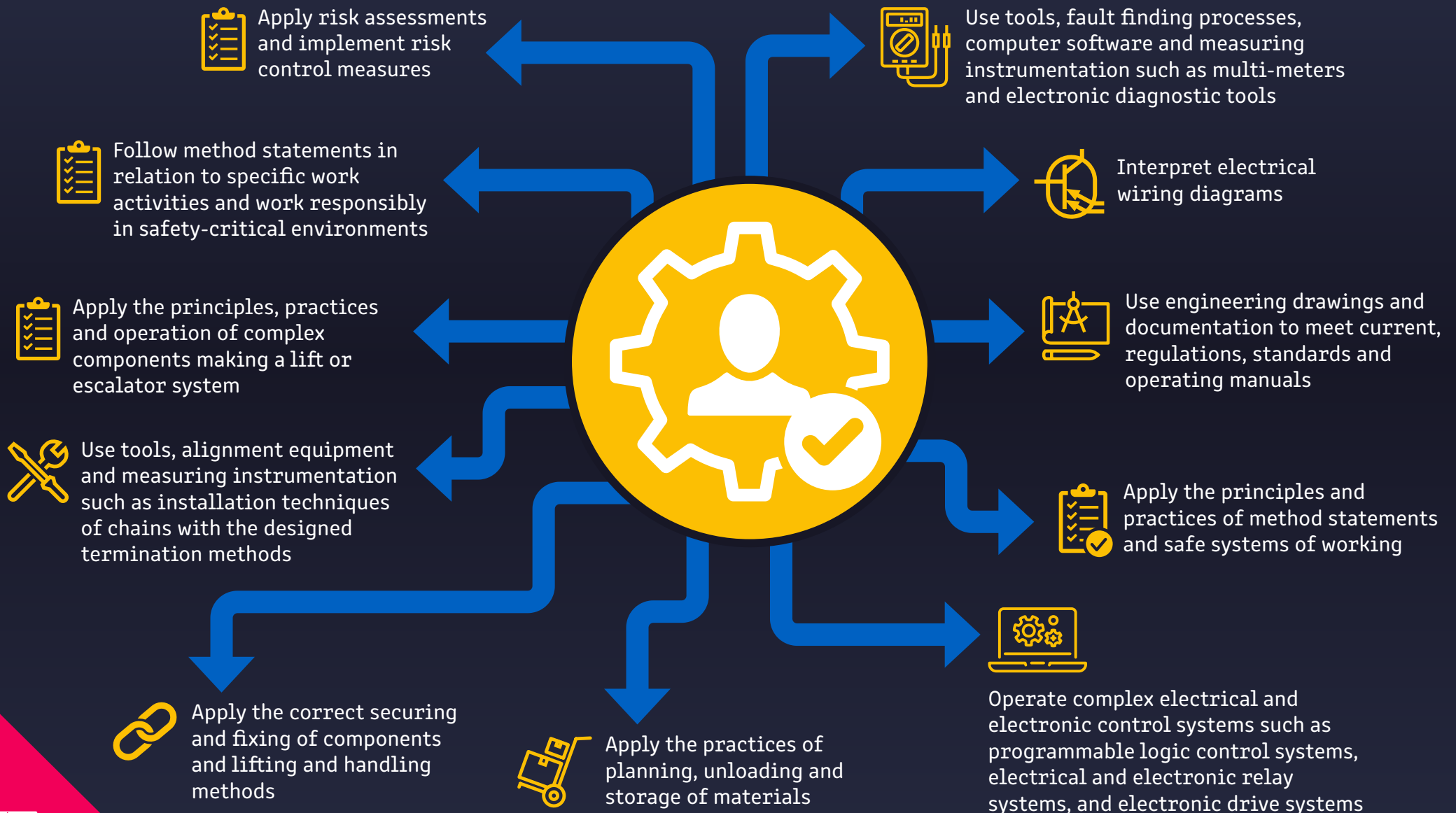
ADDITIONAL SKILLS & KNOWLEDGE

Pathway 4

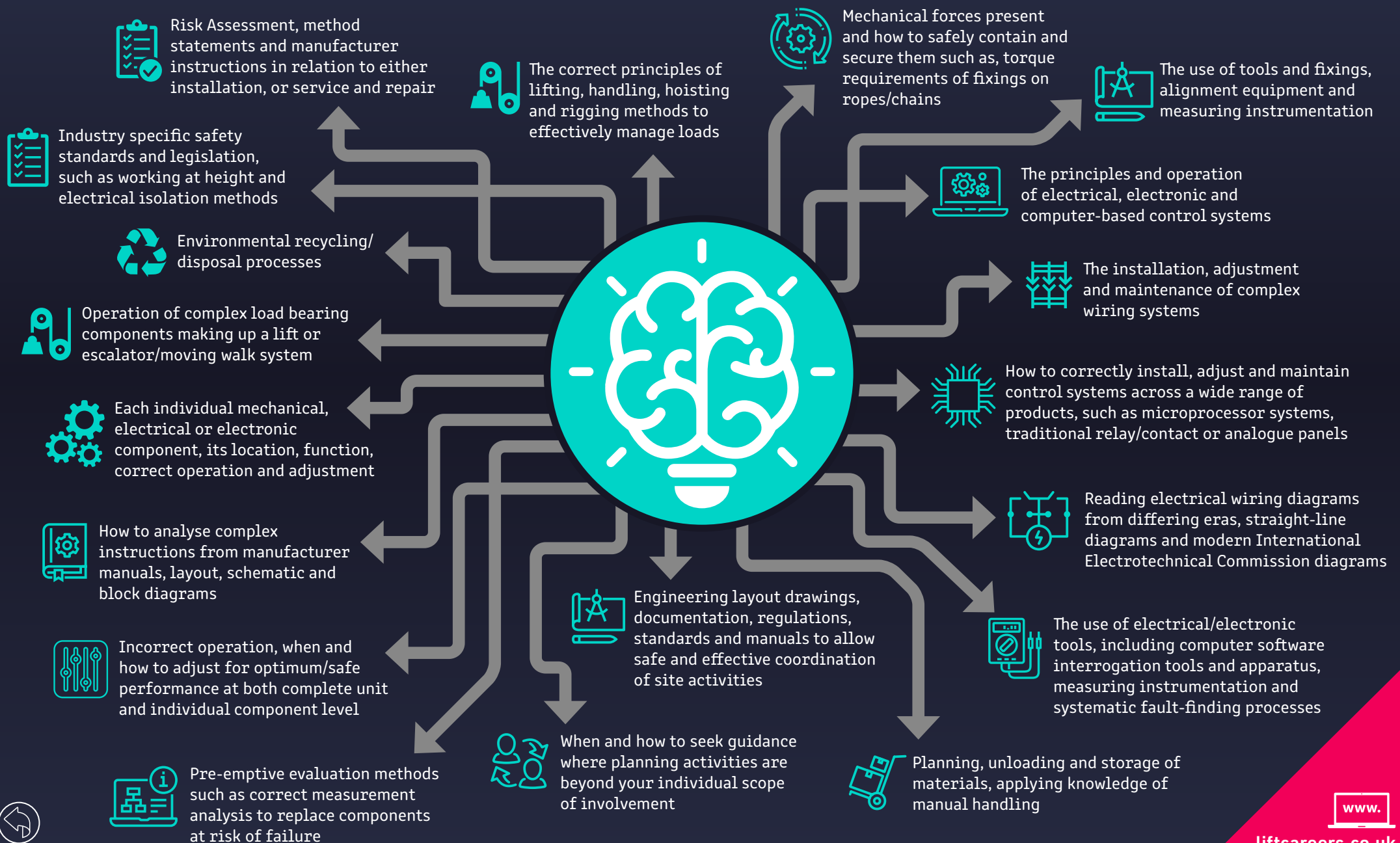
Servicing, repair and maintenance of escalators/moving walks



Core skills you'll learn during your Lift/Escalator Electromechanic Level 3 Apprenticeship



Core knowledge you'll learn during your Lift/Escalator Electromechanic Level 3 Apprenticeship



Additional skills & knowledge you'll level up with in

Pathway 1 – Installation of traction and hydraulic lift system

ADDITIONAL SKILLS



Install and adjust hydraulic systems used on lifts for all duty ranges, from single nursing home applications through to heavy duty industrial goods applications



Interpret schematic and block diagrams for hydraulic circuits and systems



Replace hydraulic components following the design criteria for the specific unit being worked upon



Install roping systems and set up to lift industry specifications



Install traction machines of various types to lift industry specifications



Conduct specific operational tests associated with hydraulic technology



Examine hydraulic components for precise operation and be able to identify incorrect operation formulating a corrective response be that adjustment or replacement

ADDITIONAL KNOWLEDGE



The practices and legislation for the installation and testing of lift systems



The general arrangement and builders work drawings related to lift installations



The roping systems used on lifts including, rope construction and termination requirements



Measuring and setting out lift equipment such as; installing lift guide rails, lift buffer systems, lift counterweight assemblies, lift machines of varying types and lift control systems of varying types



Hydraulic equipment installation requirements including pipework, hydraulic cylinders, pressure systems, and hydraulic tank systems

Additional skills & knowledge you'll level up with in

Pathway 2 – Installation of escalator/moving walk systems

ADDITIONAL SKILLS



Install and set up escalator components including steps, pallets, handrails and chains and check the components for correct operation



Examine escalator/moving walk components for precise operation and be able to identify incorrect operation formulating a corrective response be that adjustment or replacement



Replace mechanical, electrical and electronic components used on escalators following the design criteria for the specific unit being worked upon



Install and adjust mechanical and electrical systems used on units for all duty ranges, single shopping centre applications through to multiple heavy-duty public transport escalators



Conduct specific operational escalator tests associated with the technology

ADDITIONAL KNOWLEDGE



The practices and legislation for the installation and testing of escalator systems



The measuring and setting out processes for whole escalator installation and working to established tolerances for the specific unit being worked on



General arrangement/layout and builders work schematics, actions to be instigated to ensure a safe and efficient installation



Complex software and microprocessor-based equipment that requires programming and adjustment to ensure optimum performance of the components



Complex instructions and references for the installation ensuring that the site actions correctly align themselves to the requirements of the installation



GO BACK

www.

liftcareers.co.uk

Additional skills & knowledge you'll level up with in

Pathway 3 – Servicing, repair and maintenance of lift systems

ADDITIONAL SKILLS



Carry out service and repair on lifts including, checking lift hydraulic systems, including pressure systems (accumulators) for correct operation and integrity, ensuring the lift ride quality is smooth



Check lift positioning systems are setup such as incremental positioning systems, ultrasonic pulse systems and magnetic/ inductor systems, and that they are working to specification



Check, replace and setup lift door systems of varying types ensuring they operate to specification and be able to check and setup door closing pressures, and clearances



Check lift travel requirements such as the correct set up of lift travel over-runs



Correct installation of doors, ropes and belts

ADDITIONAL KNOWLEDGE



The practices and legislation for the servicing, repair and maintenance of lift systems



The use of lubricants, hydraulic fluids and cleaning materials



Fault diagnosis on lifts, location and rectification



Inspection of lift equipment



The maintenance requirements of roping systems on lifts including rope discard criteria, correct over-run requirements and rope termination requirements for lift installations



Hydraulic principles and the movement of masses utilising fluids, pumps, valve blocks, pistons and pipework in relation to lift applications

Additional skills & knowledge you'll level up with in

Pathway 4 – Servicing, repair and maintenance of escalators/moving walks

ADDITIONAL SKILLS



Carry out service and repair on escalators including, ensuring the quality of the escalator travel is smooth and escalator positioning systems are setup, such as hand rail sensors, pallet/step sensors, and that they are working to specification



Check and set up safety systems such as safety comb plates, knurl guards, step sag switches, and photocell sensors ensuring they operate to specification



Maintain, setup and repair a variety of escalator/moving walk electrical/electronic control systems



Check/adjust and repair tensioning systems used on escalators/moving walks

ADDITIONAL KNOWLEDGE



The practices and legislation for the servicing, repair and maintenance of escalator systems



The use of lubricants for escalator chains, and rollers



Inspection of escalator equipment including step/pallet clearance and discard criteria



Fault diagnosis on escalators, location and rectification



The specific safe working practices on escalators, moving walks in relation to the working environment such as busy shopping centres, building sites, on existing and newly constructed buildings



GO BACK

LIFT & ESCALATOR CAREERS
IN ASSOCIATION WITH LEIA

Lift and Escalator Industry Association, 33 / 34 Devonshire Street, London, W1G 6PY



www.

liftcareers.co.uk

